

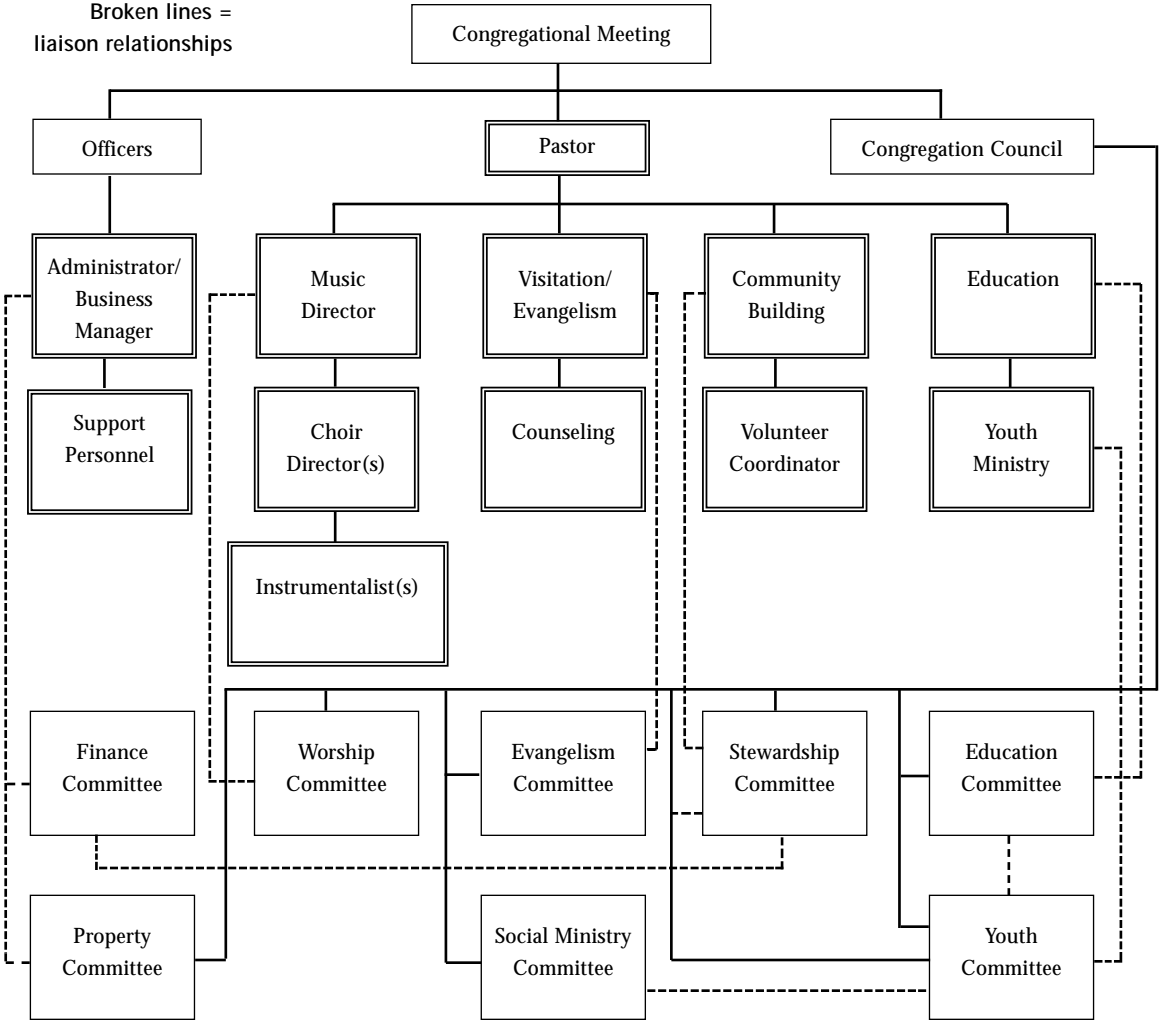
# A Staff-Intensive Structure

Framed boxes =  
paid positions

Solid lines =  
direct accountability

Broken lines =  
liaison relationships

There are many ways to set up a staff-intensive structure. In this example, the paid staff is accountable to the congregation and council through the pastor, while volunteer committee members are accountable to the council. The staff and the committees have liaison relationships with one another.



*Our Structure: Carrying Out the Vision*, copyright © Augsburg Fortress.  
May be reproduced for local use.